

# Light Rail Safety Signs

New signs and traffic signals will be installed to remind pedestrians, cyclists and drivers that they are now traveling alongside a light rail service.



## LRVs ONLY

Only Light Rail Vehicles (LRVs) are permitted to travel on the tracks. It is prohibited to drive or ride along the tracks.



## Pedestrians Give Way to Trams

Pay attention and stay alert at all times around light rail. Always look both ways and only cross the tracks at designated crossings and intersections. LRVs can approach from either direction and at any time.



## No Parking. Light Rail Vehicles Excepted

Along the light rail corridor, only Canberra Metro staff vehicles supporting light rail maintenance and operations are allowed to park as indicated by this sign.



Rail Ready

→ Are you Rail Ready?



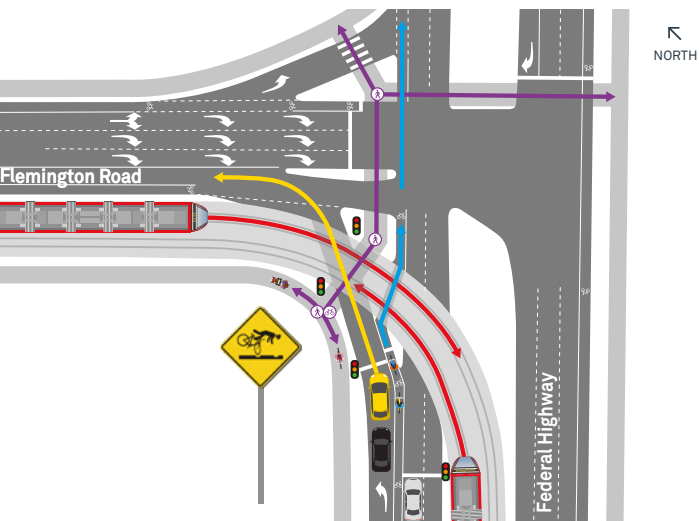
### Danger. No Entry. Authorised Personnel Only

Only authorised personnel are permitted to access this area.



### Cyclist Falling on Light Rail Tracks

This sign alerts cyclists of light rail tracks ahead. Rail tracks can be a fall hazard so practice caution. Ride across the tracks at a right angle to avoid your wheels getting stuck in the groove.



[canberra-metro.com.au](http://canberra-metro.com.au)